

## In This Issue:

Meeting Announcement	1
Upcoming Events	1
President's Letter	2+3
NAWIC Board	2+3
2015 APC	3,4+5
Member News	6-9

### *NAWIC National Office*

327 S. Adams Street  
Fort Worth, TX 76104

P: 817-877-5551

P: 800-552-3506

F: 817-877-0324

Email: [nawic@nawic.org](mailto:nawic@nawic.org)

Website: [www.nawic.org](http://www.nawic.org)



Believe  
Persevere  
Dare

**NAWIC** National Association of Women in Construction  
Kalamazoo / Battle Creek Chapter #302

# COMMUNIQUE

MAY 2015

## FOR MEMBERS-ONLY Benefit #5

NAWIC provides opportunities to build a professional network while forging lasting friendships

Okay, so you can still be our friend and not be a member, but we  our fellow members!

## Upcoming Events

*June 24 - KVCC Health Campus*

*July 22 - Chapter Planning for 2016*

*August 19 - NAWIC Michigan Joint Chapter Meeting*

*September 2 - 60th Annual Meeting & Education Conference (AMEC)*

*September 18 - Golf Outing*





## Sometimes You Just Got To Go With Your Intuition

by Juliana Garner, CIT, AIA, NCARB  
2014-2015 NAWIC Chapter 302 President

Much of our time in our careers and even in our personal lives is spent finding out what the rules, guidelines, procedures, codes, regulations, or what restrictions might be required to be followed for a particular project or challenge. We can research what the minimum standards are and what has successfully been implemented in the past. We can learn from previous successes and this can perhaps save us time and certainly keep us from total failure of our own endeavors.

I would advocate that there are times when you just need to go with your intuition. I am not suggesting that you not follow code requirements but, I am suggesting that there are times when the minimum or the suggested guidelines are just not going to service the end-users (in the case of a building) the best. I would like to suggest that if you are

### NAWIC Board 2014-2015

#### **President**

Juliana Garner, CIT, AIA, NCARB  
JG Designs  
julianagarner@msn.com  
269-569-9333

#### **Vice President**

Amanda Mason  
CSM Group  
amanda.mason@csmgroupp.com  
269-312-0434

#### **Treasurer**

Judith Naylor, CIT, CDS  
Naylor Landscape Management  
jnaylor@naylorlandscape.com  
269-375-0084

#### **Secretary**

Katrina Reed, CIT  
CSM Group  
katrina.reed@csmgroupp.com  
269-746-5600

given a challenge that your personal insight to the needs of the client or end-user might lead to a better finished project. Allowing your intuition into the scenario could also make the actual task more meaningful and more fun.

When I think about being involved in an organization such as NAWIC, there are many guidelines to follow. As your Chapter President, it is my duty to make sure that the minimum guidelines for being a NAWIC Chapter are being upheld. However, by allowing my intuition to guide me as I have over these last almost two years, has made being Chapter President so much more than just a position that I volunteered for. The NAWIC core purpose; “To enhance the success of women in the construction industry” is what led me to join NAWIC. My inner voice always remembers’ that.

I would like to encourage all of you the next time you take on a challenge to listen to that inner voice that I call intuition and make more fun out of the task.



#### **Immediate Past President**

Suzannah Deneau  
Wightman & Associates  
sdeneau@wightman-assoc.com  
269-927-0200

#### **Directors**

Myndi Bacon, PE  
Soil & Materials Engineering, Inc.  
bacon@sme-usa.com  
269-323-3555

Karen Gustafson  
ECJ Construction Service, Inc.  
kgustafson912@gmail.com  
269-207-2441

Jenna Horigan, LEED BD+C, Assoc AIA  
Seven Generations Architecture  
& Engineering, LLC  
jhorigan@7genae.com  
269-927-0144

Nancy Peterson  
Azon  
npeterson@azonusa.com  
269-385-5942

## **“Tap into NAWIC: Experience the Flavor” At the 2015 APC (Annual Planning Conference)**

The NAWIC North Central Region (OH, MI, IN, KY, and WV) 2015 APC will be hosted by the Kalamazoo/ Battle Creek Chapter at the Radisson in downtown Kalamazoo on Friday evening November 6, 2015 and all day Saturday, November 7, 2015. This will be a great opportunity for you to network, learn, and share with fellow NAWIC sisters from this 5 state area. Come “Tap into NAWIC” with us.

More Information: <http://nawickalamazoobc.org/apc/>

Sponsorship Opportunities: <http://nawickalamazoobc.org/wp-content/uploads/2015/05/2015-APC-Sponsorship-Form.pdf>

Advertising Opportunities: <http://nawickalamazoobc.org/apc/advertising-opportunities/>

*“Tap into NAWIC: Experience the Flavor”*

**TAP INTO NAWIC**

**EXPERIENCE THE FLAVOR**

**NOV. 6-7, 2015**  
**RADISSON PLAZA HOTEL**  
**100 W. MICHIGAN AVENUE, KALAMAZOO, MI**

FOR MORE INFORMATION, CONTACT  
 JULIANA GARNER, CHAPTER PRESIDENT / APC COMMITTEE CHAIR  
 EVENTS@NAWICKALAMAZOIBC.ORG

[WWW.NAWICKALAMAZOIBC.ORG/APC](http://WWW.NAWICKALAMAZOIBC.ORG/APC)

Did you know you that NAWIC Kalamazoo/  
 Battle Creek #302 is on  
 Facebook, Twitter and LinkedIn??

Like us, follow us and join us for our next meeting!



## 2015 APC [Annual Planning Conference]

### A little about APC...

The NAWIC North Central Region (OH, MI, IN, KY, and WV) 2015 APC will be hosted by the Kalamazoo/ Battle Creek Chapter at the Radisson in downtown Kalamazoo on Friday evening November 6, 2015 and all day Saturday, November 7, 2015. This will be a great opportunity for you to network, learn, and share with fellow NAWIC sisters from this 5 state area.

### Call for committee members:

The chapter board invites you to utilize your event planning talents and be part of the 2015 APC Committee. Being on this committee is a great way to get to interact with more of the chapter members and exercise your talents. The 2015 APC Committee can be contacted at:

[nawic302@nawickalamazoobc.org](mailto:nawic302@nawickalamazoobc.org)



**North Central Region  
Director**

Anne Pfleger

Email: [akpnawic@charlesinc.com](mailto:akpnawic@charlesinc.com)

Website: [www.nawic4.org](http://www.nawic4.org)



### Call for Presenters for the 2015 APC

The Kalamazoo/ Battle Creek Chapter members are so excited that we will be hosting a NAWIC regional event on November 6-7<sup>th</sup>, 2015 at the Radisson in downtown Kalamazoo. This is an opportunity for us to showcase our local community and local talents to (50-75) ladies from a five (5) state area. The NAWIC North Central Region is comprised of members from the states of OH, MI, IN, KY, and WV.

This years' APC (annual Planning Conference) theme is: **Tap into NAWIC**. We are seeking to provide the attendees with opportunities for personal and professional growth as it relates to the design and construction industries.

We want to invite you to be part of this event to gain maximum exposure for you and the firms that you represent. If you would like to be a presenter at this conference (speaker sessions will be held on Saturday, 11/7/2015) or know of a presenter that you feel would be awesome to share with our NAWIC sisters then we invite you to email this form to: [nawic302@nawickalamazoobc.org](mailto:nawic302@nawickalamazoobc.org). Speaker sessions shall be 60 – 90 minutes in length. Forms are requested to be returned by March 1, 2015 for first round review by the regional director.

**Contact Name:** \_\_\_\_\_

Firm Name: \_\_\_\_\_

Firm Address: \_\_\_\_\_

Firm Telephone: \_\_\_\_\_

Email Address: \_\_\_\_\_

**Presenter Name:** \_\_\_\_\_

Firm Name (if different from Contact's Firm): \_\_\_\_\_

Firm Address: \_\_\_\_\_

Firm Telephone: \_\_\_\_\_

Email Address: \_\_\_\_\_

**Presentation Description:** Please attach additional sheets as needed to describe your presentation

\_\_\_\_\_

\_\_\_\_\_

**Learning Credits and Description:**

Organization and Program #: \_\_\_\_\_ Credits: \_\_\_\_\_

**Fee:** Please provide speaker fees including anticipated reimbursable expenses.

\_\_\_\_\_

\_\_\_\_\_

# Sounds of Success:

# NAWIC CELEBRATES



# 60 Years!

60th Annual Meeting and Education Conference  
Nashville, Tenn. • Sept. 2 - 5, 2015

## Member News



### North Central Region Forum

They say “you are the people surround yourself with.” If that is true, imagine spending a weekend surrounded by 70+ women who exemplify leadership, ambition, positivity, intelligence, articulacy, and kindness. That is what FORUM was for me. Having only ever been to chapter and state-level events, I was immediately inspired and energized upon arriving at Forum in Cleveland, OH and finding myself surrounded by so many dynamic women.

Juliana Garner and I arrived Friday, just in time for the General Session which was supplemented by a range of interesting and informative presentations including a City Welcome from Destination Cleveland’s Dave Gilbert, leadership tips from Vice President hopeful, Stephanie Crane, and advice on staying clear of burnout from Deb Olejownik. That evening, the Cleveland chapter put on a beautiful dinner for everyone in the hotel with an after-dinner magic show by a fantastically talented (and hilarious) local magician.

Myndi Bacon arrived in time to join us for a full day of professional development on Saturday. Breakout sessions included Cleveland architecture, financial planning, finding your social style, and a session focused on helping you to create your perfect personal sales pitch. A lovely and delicious awards luncheon was held in the afternoon where Kalamazoo/Battle Creek was recognized for our website, newsletter, Block Kids event, WIC Week activities, and public relations (way to go, 302!). The day was capped off with a lively cocktail reception followed by a beautiful formal dinner. Everyone looked stunning and it was a fabulous end to a fun and educational weekend.

### 2015 Forum Awards!!

Nancy Peterson  
4-Most Leader

Katrina Reed  
New Leader

“You are Easy” Website Award

You Kept Us Up to Date  
Newsletter Award

Excellence in PR/  
Marketing 1st Place

### WIC Week Continuity

Great job ladies of the Kalamazoo Battle Creek Chapter #302. Keep up the hard work and dedication to this great organization!

### The NAWIC Objective

To unite for their mutual benefit women who are actively employed in the various phases of the construction industry;

To promote cooperation, fellowship and a better understanding among the members of the construction industry;

To promote education and contribute to the betterment of the construction industry;

To encourage women to pursue and establish their careers in the construction industry.

## North Central Region Forum (Continued)

This being my first Forum, I worked to fill my “first-timer” booklet with signatures from as many attendees as possible. In doing so, I introduced myself to a host of women in the 2 full days of the trip. My signatures were collected slowly at first as I found myself shy (crazy!) in presence of so many out-spoken women who all seemed to have a lasting friendship with everyone else in the room. I quickly learned, however, that all the women in this organization share the same upbeat and inviting personality that our own chapter members carry and before I knew it I had over 60 signatures and many new friends. Each room you walked into during Forum was filled with chatter and laughter and there was a business connection to be made at each table you found yourself at. I was truly motivated and inspired by everyone that I met at Forum. I am so happy that Kalamazoo is the host chapter for APC.

Experiencing NAWIC on the grander scale is so important to understanding the true power, purpose and personality of this organization!

By Suzanne Grix



## Landscape Forms makes Every Day “Earth Day”

A plant tour and pizza dinner on April 22 —Earth Day 2015— with about 15 attendees was hosted by one of our newest NAWIC members, Amanda Nawara, a business development representative for Landscape Forms in the West Michigan market.

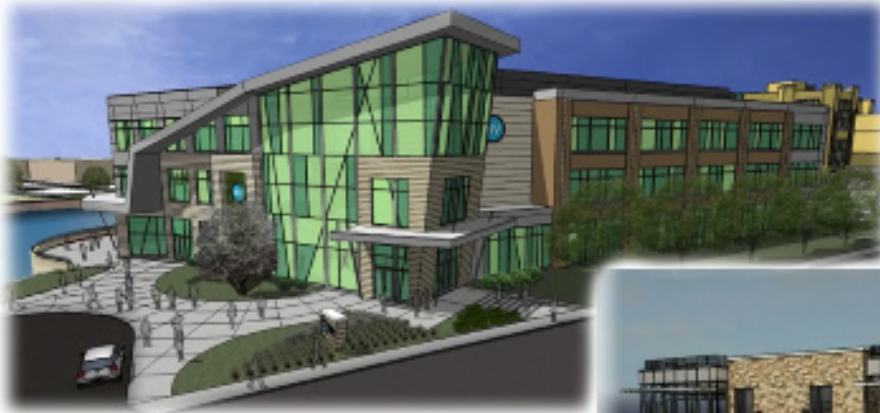
With roots in the landscape and a stated purpose to “Enrich Outdoor Spaces,” Landscape Forms has a special relationship to the natural environment. Visiting the world-class facility headquarters located on a 50-acre campus along the Kalamazoo River, was a great way for our chapter to observe Earth Day!

Landscape Forms produces high-design site furniture and accessories that create a sense of place in outdoor environments. Each piece is designed and hand-produced by a skilled and motivated staff. Landscape Forms nurtures their own people to high achievement and even offers intensive skills training and apprenticeships for its newest team members.

Three expansion and construction projects—either at the headquarters or at two separate sites within a six-mile radius are underway for Landscape Forms.

- During our tour we were introduced to the lighting products and the campus has just unveiled its outdoor lighting and furniture show room by hosting a national lighting conference.
- In mid-June 2015, construction had begun on a new 165,000 square foot facility at Midlink, the historic General Motor’s Fisher Body Plant located in Kalamazoo. By repurposing a large part of this imposing industrial structure, the company acquires unique space to accommodate its growth.
- Nearing completion in Richland, Michigan, is a 17,000 square foot facility dedicated to the production of Landscape Forms’ lightweight concrete products.

By Nancy Peterson



## KVCC Health Focused Campus

Coming January 2016



### Progress continues at KVCC Health Focused Campus

Kalamazoo, MI – One of largest projects in downtown Kalamazoo since 1998 (Bronson Methodist Hospital expansion) is taking shape as summer arrives, and the outer envelopes of three new facilities (Culinary School, Kalamazoo Community Mental Health, and the Food Innovation Center) are almost complete.

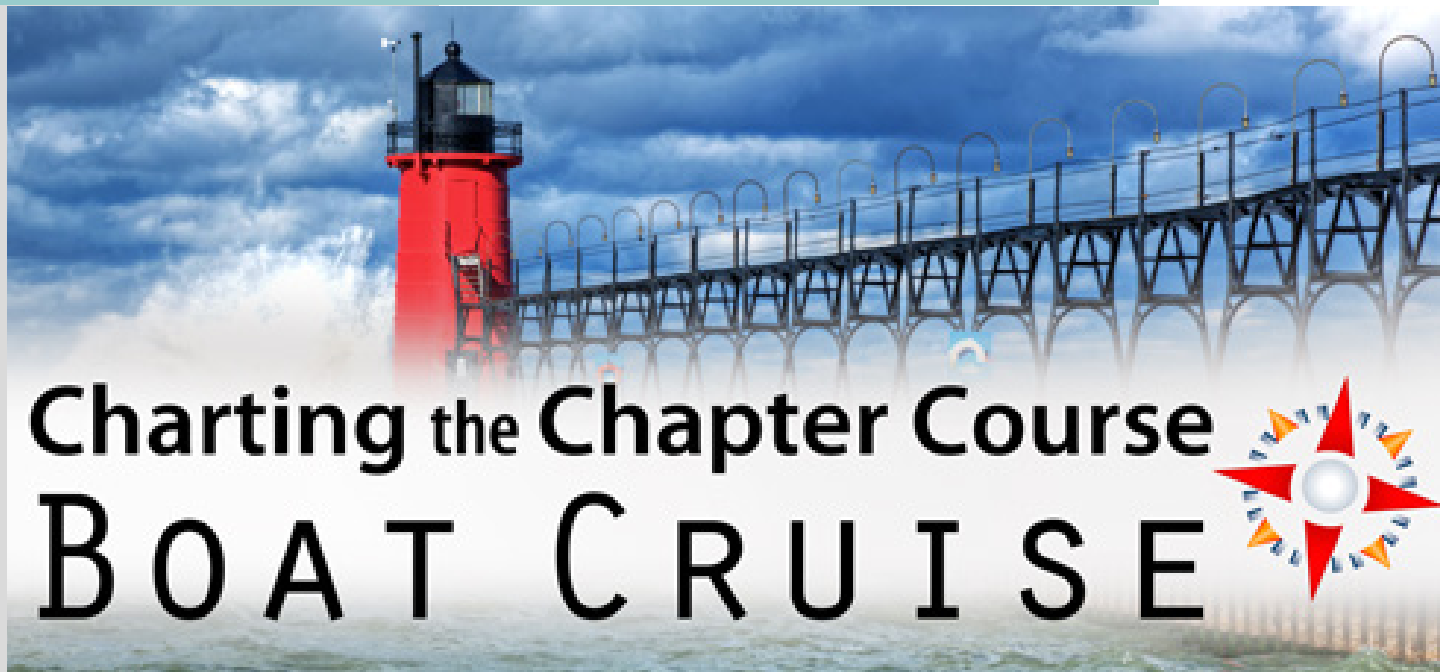
In cooperation with Bronson Healthcare Group and Kalamazoo County Mental Health and Substance Abuse Services, Kalamazoo Valley Community College's (KVCC) vision for this project is to create a campus focused on wellness and food sustainability. The new campus will be developed on 13.3 acres of unused land donated by Bronson Healthcare Group, where KVCC will expand its curriculum to include training in sustainable food production, distribution, and preparation. The campus will be a catalyst for urban revitalization, community health, and workforce development.

*Article continued on page 9.*

*Congratulations goes to....*

**Myndi Bacon at SME on her promotion!!!**





# Charting the Chapter Course

## BOAT CRUISE

### Boat Cruise and Charting the Chapter Course

To help increase the value NAWIC brings to women in construction and continue to make great strides in our NAWIC Chapter, we set aside time each summer to participate in the annual chapter planning.

Part of the focus in July will be to plan monthly meetings for the Chapter's 2015-2016 year.

*Please note this event is members only!*

#### Questions?

Call Chapter President  
Juliana Garner at  
(269)569-9333

In constructing the KVCC Culinary School, CSM Group had the responsibility of working in collaboration with the City of Kalamazoo, Bronson Healthcare Group, Department of Environmental Quality, Michigan Department of Environmental Equality, and the U.S. Environmental Protection Agency to ensure construction impact to the surrounding environment was minimal.

There were many aspects of the existing/natural environment to account for, including surrounding city parks, residential properties, public access/walkways, bus routes, Bronson Hospital (open 24/7), and a river/creek, all which need to have safe routes of access and the ability to remain fully functional.

CSM Group invested quality time and resources to ensure our impact to the environmental footprint surrounding our project site was safe and always monitored. We were able to do this with: proper erosion control measures; separation barriers; tributary curtains; mulch blankets; air, soil, and water monitoring; and a third party environmental consultation.

The Health Focused Campus is anticipated to open to students and faculty in January 2016.

For a sneak peak into the project, visit  
<https://youtu.be/8Uh5qe0zw4U>.

By Katrina Reed, CIT, LEED Green Associate